

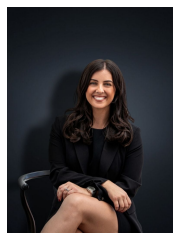


4/61-63 Ballan Road WERRIBEE VIC

2  1  1 

Located perfectly within close proximity to Werribee CBD, Railway Station & with Parklands just around the corner this low maintenance unit offers you, two fitted bedrooms, main with a walk in robe, spacious lounge with cathedral ceilings and a good sized separate meals area. Appointments include gas heating, floating floors throughout, a neat kitchen with ample cupboard space, central bathroom, single lock up garage and a good sized back yard. A great opportunity for a first home buyer, elderly or investors to add to their portfolio!
(PHOTO ID REQUIRED AT OPEN FOR INSPECTION)

Building Size : 12 sqm
Land Size : 214 sqm
View : <https://www.ypa.com.au/7359989>



Kirsty Cunningham
0414 344 475

At YPA Estate Agents 'our service will move you'