

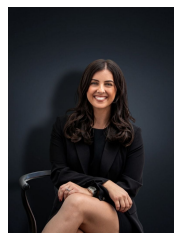


47 Edgar Street WERRIBEE VIC

4 🏠 2 🚗 1 🚗

This exceptional residence has been architecturally designed and is awaiting its next proud owner. Located in one of Werribee's finest areas this property will not let you down in any way, shape or form. This high quality 2 storey home boasts timber lined cathedral ceilings on both floors, from the minute you walk through the welcoming double doors you are presented with a large lounge area including a beautiful open brick fireplace, it does not stop there the open plan hostess kitchen/meals area is only steps away with the kitchen equipped of gas appliances, loads of cupboard space and beautiful Jarrah bench tops. Walking upstairs you are presented with the large master suite with en-suite and balcony area. With four bedrooms in total this home will suit any family. Situated on approximately 840 sq m of land and has loads of potential. The home has a large carport and lockup single garage with remote control and rear roller door giving access to a large concrete parking

Building Size : 26 sqm
Land Size : 840 sqm
View : <https://www.ypa.com.au/7360080>



Kirsty Cunningham
0414 344 475