



## 193 Heaths Road HOPPERS CROSSING VIC

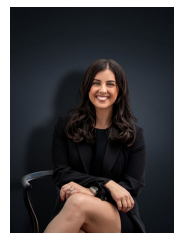
3 1 1

Presenting to you this solid home perfectly positioned in the heart of Hoppers Crossing with main road position and exposure to be used to its fullest potential. Within walking distance to the Werribee Plaza Shopping Centre, schools, public transport and just a few minutes away from the Hoppers Crossing Railway Station.

Comprising three bedrooms, a central bathroom and separate shower room, large lounge upon entry and separate kitchen/meals area this home has all the amenities you could ask for.

Luxury appointments include; gas heating, air conditioning, roller shutters, pergola, garden shed and side access. Currently leased periodically for \$1,278.00 per calendar month this home would make a fantastic investment opportunity to add or kick off a portfolio!

**Building Size** : 13 sqm  
**Land Size** : 581 sqm  
**View** : <https://www.ypa.com.au/7360124>



**Kirsty Cunningham**  
0414 344 475