



32 Daphne Crescent WERRIBEE VIC

4 2 2

Superbly located nearby to public transport, local shops and only a short distance from Werribee CBD this ideal family home is sure to surprise you.

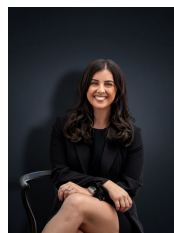
Comprising four fitted bedrooms, master including walk in robe and ensuite whilst the remaining rooms are fitted with built in robes. Upon entry the formal lounge is a large space leading through to the open plan kitchen/meals area. Luxury appointments include, reverse cycle heating and cooling, ceiling fans, single carport, large 6 x 3m garden shed, plenty of space in the backyard for the kids to play. All this situated on approximately 564 M2 of land. Securely tenanted until March 2015 at \$1,260.00 per calendar month this home will also be a fantastic addition to the portfolio of a savvy investor.

(PHOTO ID REQUIRED AT OPEN FOR INSPECTION)

Building Size : 19 sqm

Land Size : 564 sqm

View : <https://www.ypa.com.au/7360147>



Kirsty Cunningham
0414 344 475

At YPA Estate Agents 'our service will move you'