



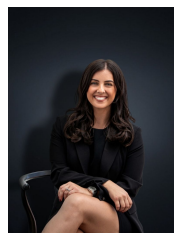
1 Rutman Close WERRIBEE VIC

4 2 2

Located in central Werribee this beautiful family home is built perfectly to suit a large family and those who love to entertain!

Tucked away in a quiet court location this home boasts the finest quality of appointments. Totalling four bedrooms plus a study, the master suite is fitted with a large walk in robe and spa ensuite and double shower which opens out to a quiet secluded fernery, while the remaining three are all fitted with built in robes and plenty of space. Upon entry is the formal lounge and formal dining, walking through to the large open plan kitchen/meals and family room. The hostess kitchen is appointed with laminate bench tops, stainless steel appliances, dishwasher and expansive walk in pantry. You are not compromised for space in this home with an additional large rumpus room that opens out to the backyard entertaining area including wet bar, spa and in ground solar heated pool.

Building Size : 32 sqm
Land Size : 800 sqm
View : <https://www.ypa.com.au/7360185>



Kirsty Cunningham
0414 344 475