



20 Fiona Court WERRIBEE VIC

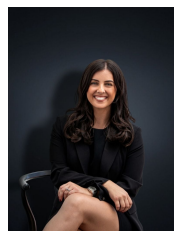
3 2 1

In a position that could not be any more perfect this beautiful home is within walking distance to Sims shopping complex, public transport, schools and public transport and only a short walk from Werribee CBD and Train station.

This home presents to you three spacious fitted bedrooms, main bedroom with ensuite and walk in robe, open plan family and meals overlooking the neat kitchen with abundance of cupboard space and a separate formal lounge upon entry.

With quality appointments including ducted heating, split system air conditioning, remote garage with internal access and a very low maintenance courtyard area to the side and rear of the home. This home is sure to tick all the boxes, call to arrange your private viewing today!
(PHOTO ID REQUIRED AT OPEN FOR INSPECTION)

Building Size : 15 sqm
Land Size : 238 sqm
View : <https://www.ypa.com.au/7360220>



Kirsty Cunningham
0414 344 475