

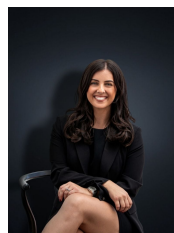


9 Park Place HOPPERS CROSSING VIC

4  2  2 

Embrace the benefits that this centrally located and well-appointed family home can offer. Set overlooking parklands and handy to all amenities, this fun home offers both formal and informal living zones, separate study or potential 4th bedroom, master with ensuite and WIR and a massive rear living area ideal as a teenagers retreat or rumpus. Keeping things comfortable inside there is ducted heating and extensive porcelain tiles throughout while outdoors entails double garage with rear access and a land size of approx 670m² land for the kids to play. The central kitchen has been finished with vinyl wrap cabinetry and complimented with ample cupboard space and storage. Low maintenance gardens, shops and both primary and secondary schools only a short walk away this home is sure to grab every family member's attention.
(PHOTO ID REQUIRED AT OPEN FOR INSPECTION)

Building Size : 25 sqm
Land Size : 680 sqm
View : <https://www.ypa.com.au/7360244>



Kirsty Cunningham
0414 344 475