

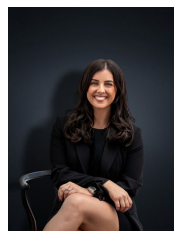


## 56 Grevillea Crescent HOPPERS CROSSING VIC

4 2 2

This just has to be the one you have been waiting for. The complete family package, the entertainers' delight, the sensible home, that large block you dreamt off. That home with all the luxuries you also dreamt of spooling your lifestyle with, the ABSOLUTE answer to what you have been looking for! Upon arrival meticulously manicured gardens with feature briquette paving quickly set the scene for what is to follow! Offering a large formal lounge, an open plan family room adjoins the large meals and a spacious renovated kitchen embracing quality 900mm upright Smeg cooking with a Bosch dishwasher. Enjoy ducted heating and evaporative ducted keeping you comfortable all year around. Entertaining will be a pleasure from the gabled steel paved pergola with roller door rear access from the automated double garage, while the outdoor decked in ground heated spa offers the chance to relax and take in the gorgeous landscaped setting. The

**Building Size** : 22 sqm  
**Land Size** : 709 sqm  
**View** : <https://www.ypa.com.au/7360258>



**Kirsty Cunningham**  
 0414 344 475