



## 49 Everwin Drive WERRIBEE VIC

3 2 1

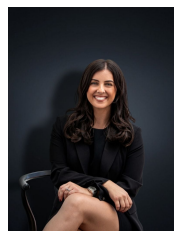
Are you down-sizing, a first home buyer or a smart investor looking for a solid home? Well if so, this abode has everything you require! Located in a central pocket of Werribee you are within easy reach to Werribee CBD, railway station and within walking distance to public transport, reputable schools and parks.

Comprising three bedrooms, en-suite and walk in robe to the master. Large living area to the centre of the home providing plenty of space for the family, the kitchen/meals arrangement is adjacent to this and provides plenty of cupboard space, gas cooktop and dishwasher.

Quality appliances include ducted heating, split system air conditioning, low maintenance gardens and single garage with remote control.

(PHOTO ID REQUIRED AT OPEN FOR INSPECTION)

**Building Size** : 14 sqm  
**Land Size** : 300 sqm  
**View** : <https://www.ypa.com.au/7360283>



**Kirsty Cunningham**  
**0414 344 475**

At YPA Estate Agents 'our service will move you'