



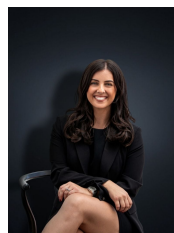
## 2/10 Bailey Street WERRIBEE VIC

2 1 2

Situated within walking distance to Watton Street and its cafes and restaurants this low maintenance 2 bedroom unit has it all. Featuring generous bedrooms, good size kitchen with ample cupboard space, adjoining meals area and open lounge. A neat court yard for a possible veggie patch or dog the low maintenance gardens and added security of being at the rear makes it an ideal please for those seeking a secure and low maintenance life style.  
(PHOTO ID REQUIRED AT OPEN FOR INSPECTION)

**Building Size** : 11 sqm  
**Land Size** : 206 sqm  
**View** : <https://www.ypa.com.au/7360309>

At YPA Estate Agents 'our service will move you'



**Kirsty Cunningham**  
0414 344 475