



18 Callander Crescent HOPPERS CROSSING VIC

4 2 1

This great home situated in the highly sought after Mossfield Estate would be ideal for the first home buyer or investor.

Featuring 4 good sized bedrooms all with built in robes, master with ensuite and 2 large living areas ideal for the growing family. Other features include zoned ducted heating, evaporative cooling and solar electricity.

Outdoors the list goes on with an undercover pergola area, shed and oversized carport all situated on a family friendly sized block of just over 700m².

Located close to popular schools, shops, Hoppers Crossing train station and freeway access this home is a must to add to your inspection list.

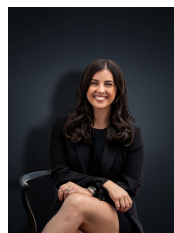
(PHOTO ID REQUIRED AT OPEN FOR INSPECTION)

At YPA Estate Agents 'our service will move you'

Building Size : 16 sqm

Land Size : 702 sqm

View : <https://www.ypa.com.au/7360312>



Kirsty Cunningham
0414 344 475