



6 Pelican Place WERRIBEE VIC

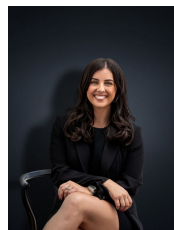
3  1 

The perfect first home or investment opportunity centrally positioned with schools, transport, Werribee Plaza shopping centre and local shops all just a few minutes away.

Presenting three fitted bedrooms with built in robes, large lounge room with floating floorboards, gas heating and split system air conditioning and a kitchen/meals arrangement. Outdoors is a massive yard with unlimited potential for those moving in and also STCA sub-division potential for a smart investor! Situated on approximately 565 sq. m

A great property to add to your portfolio or to move into and enjoy living in a super convenient location within the ever so growing Wyndham City!
(PHOTO ID REQUIRED AT OPEN FOR INSPECTION)

Building Size : 12 sqm
Land Size : 565 sqm
View : <https://www.ypa.com.au/7360320>



Kirsty Cunningham
0414 344 475