



61A Walls Road WERRIBEE VIC

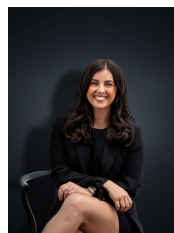
2 1 1

Situated within walking distance to schools, public transport and shopping facilities is this immaculately presented home with new floor coverings and freshly painted. Featuring 2 bedrooms both with built in robes, large lounge, hostess kitchen with stainless steel appliances, adjoining meals area and direct access to a low maintenance yard. With quality extras such as gas heating, floating floors and internal access to the garage the home offers the complete package and ready to move straight in. If you're after an extremely well looked after and presented home with low maintenance gardens and no body corporate then look no further!

(PHOTO ID REQUIRED AT OPEN FOR INSPECTION)

At YPA Estate Agents 'our service will move you'

Building Size : 12 sqm
Land Size : 307 sqm
View : <https://www.ypa.com.au/7360325>



Kirsty Cunningham
0414 344 475