



## 36 Tamarind Crescent WERRIBEE VIC

3  1  1 

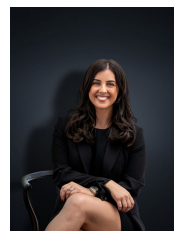
Proudly presenting an opportunity for someone who is looking to buy a first home, or seeking an investment in a very central location of Werribee with everything on their doorstep.

Special features are solid concrete slab house, new floor board throughout, renovated bathroom and block size of 557 sqm with an option to do sub division (STCA) make this house top of the list.

Presenting; three bedrooms all with built in robes, central renovated bathroom, a good sized lounge area, separate dining area which leads through to a neat kitchen with enough cup board space, car port with a large allotment for kids to play or small get together.

Attention investors, this house is giving return of \$1130 per calendar month on monthly basis and the lovely tenants are more than happy to sign new lease agreement.

**Building Size** : 18 sqm  
**Land Size** : 557 sqm  
**View** : <https://www.ypa.com.au/7360326>



**Kirsty Cunningham**  
0414 344 475