

## 2A Sittella Court WERRIBEE VIC

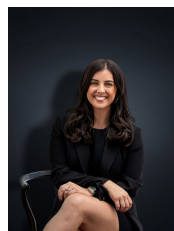
3  2  1 

Located in a central pocket of Werribee this home is within walking distance to Werribee Plaza Shopping Centre, public transport and only a short distance from schools & public transport!

Including three bedrooms, master with walk in robe and en suite, remaining bedrooms with triple robes and ample storage space throughout the entire home! Open plan by design the kitchen/meals area contains ample space; the kitchen includes stainless steel appliances and dishwasher.

Appointments include ducted heating, split system cooling, porcelain tiles, courtyard and a single lock up garage - currently leased until November 2015 for \$1,130.00 per calendar month. . Not many units have all of these features; this is a fantastic opportunity to secure a comfortable investment property!

**Building Size** : 12 sqm  
**Land Size** : 334 sqm  
**View** : <https://www.ypa.com.au/7360328>



**Kirsty Cunningham**  
0414 344 475