



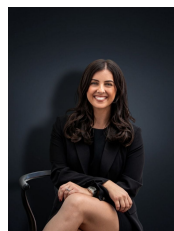
### 3 Acer Terrace HOPPERS CROSSING VIC

3 2 2

Perfectly positioned in a quiet court location this ever so loved family home boasts all the features any buyer could ever dream of! From the minute you step into this cherished home it springs to life! Solid timber floors greeting you upon entry and continue throughout the home, and are only the start of the features list! Located at the front of the home, overlooking the beautiful front garden is the formal lounge and dining area and the master bedroom with WIR and renovated ensuite. This leads through to the super special renovated kitchen with all of the upgrades including waterfall stone bench tops, glass splashbacks, Smeg 900mm stainless steel appliances including a double drawer dishwasher, which overlooks a good sized meals area and leads out to a fantastic outdoor entertaining space.

Bonus features include double remote garage with feature panelled door, beautifully landscaped gardens with a full

**Building Size** : 22 sqm  
**Land Size** : 667 sqm  
**View** : <https://www.ypa.com.au/7360344>



**Kirsty Cunningham**  
**0414 344 475**