



12B Torbay Court WERRIBEE VIC

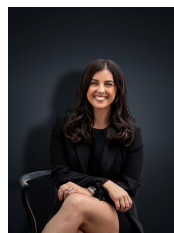
2  1  1 

In a central pocket of Werribee nearby to local shops, public transport, reputable schools is this perfectly up kept and low maintenance home. With no attached body corporate fees this would make a perfect start or addition to your property portfolio. Leased periodically, with an increase to begin at \$999 per calendar month from July 15, 2015 onward the open plan home consists of:

- 2 bedrooms
- 1 central bathroom
- Gas cooking appliances
- Separate laundry
- Gas heating
- Air conditioning
- Single carport
- Garden shed
- Pergola and decent sized backyard

(PHOTO ID REQUIRED AT OPEN FOR INSPECTION)

Building Size : 8 sqm
Land Size : 293 sqm
View : <https://www.ypa.com.au/7360349>



Kirsty Cunningham
0414 344 475