



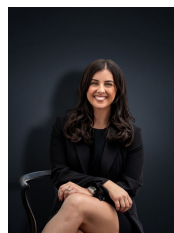
2 Cameron Drive HOPPERS CROSSING VIC

5 🚗 2 🚗 2 🚗

Perfectly located just minutes away from great public and private schools, public transport on your doorstep, with Pacific Werribee shopping centre and easy freeway access a stone's throw away. This little gem will appeal to all age groups and investors alike.

Building Size : 24 sqm
Land Size : 674 sqm
View : <https://www.ypa.com.au/7360370>

- Features include
- Master with en suite and WIR
- Multiple living areas include formal lounge & dining
- Tiled kitchen meals, includes 900 cooktop, leading to great sized family room
- 4 bedrooms with BIR
- Fifth bedroom retreat
- Central bathroom includes, shower and bath
- Double garage with rear drive through access
- Beautifully manicured front yard
- Ducted heating / wall air conditioning



Kirsty Cunningham
0414 344 475