

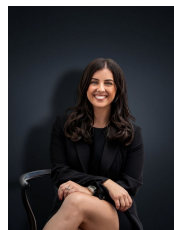
## 46 Talliver Terrace TRUGANINA VIC

3 2 2

Boasting TWO living areas this well presented home is perfect for many potential buyers in today's market! Only 7 years young, this property is situated nearby to local shops including Wyndham Village Shopping Centre, highly reputable schools including St. Claire's and Westbourne Grammar, Child care centres and freeway access. Also located within close proximity to Williams Landing Train Station the highly sought after property is inclusive of:

**Land Size** : 320 sqm  
**View** : <https://www.ypa.com.au/7360373>

- Three bedrooms
- Master with walk in robe & ensuite
- Formal lounge
- Open plan kitchen/meals and family area
- Split system air conditioning
- Ducted heating
- Double remote garage
- Established, low maintenance gardens
- Parkland views



**Kirsty Cunningham**  
0414 344 475