



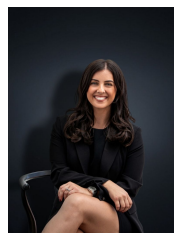
7 Parvum Way WYNDHAM VALE VIC

3 2 2

Perfect home or investment option with oodles of space!! Vibrant home set in a wonderful area, close to the Wyndham Vale Train Station, Supermarkets and Shops. Comprising generous sized bedrooms, master entailing ensuite with oversized shower and walk in robes. Living areas entail a formal lounge, open study or formal dining, chefs' kitchen complete with classy stainless steel appliances including dishwasher; adjoining open plan living, meals and family rooms. Ducted heating will keep things cosy while there is also a double garage with handy internal access. This is one to just move into, be it yourself or your tenants and get on enjoying your life!
(PHOTO ID REQUIRED AT OPEN FOR INSPECTION)

At YPA Estate Agents 'our service will move you'

Building Size : 20 sqm
Land Size : 408 sqm
View : <https://www.ypa.com.au/7360383>



Kirsty Cunningham
0414 344 475