

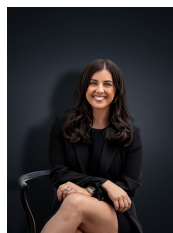
30/156-158 Bethany Road HOPPERS CROSSING VIC

2  **1**  **1** 

Superbly located in central hoppers crossing with shops, primary and secondary schools within walking distance and parklands at your doorstep. This low maintenance home is perfect for first home buyers or investors alike.

Offering 2 generously sized bedrooms plus study, 2 way bathroom, Large open plan kitchen meals area adjoining family room. Designed with convenience in mind also offers ducted heating Remote single garage with internal access and the added security of being in a safe complex. Ideal as a secure investment or first home, this well maintained property will meet your every need.
(PHOTO ID REQUIRED AT OPEN FOR INSPECTION)

Building Size : 12 sqm
Land Size : 215 sqm
View : <https://www.ypa.com.au/7360384>



Kirsty Cunningham
0414 344 475

At YPA Estate Agents 'our service will move you'