



## 1/93 Heaths Road HOPPERS CROSSING VIC

3 1

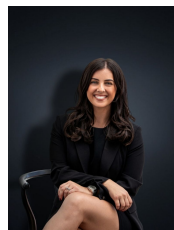
This ideal home or investment opportunity is positioned walking distance to Hoppers Crossing train station, schools, the newly renovated Pacific Plaza, easy freeway access and only 30 minutes to Melbourne CBD.

**Building Size** : 12 sqm  
**Land Size** : 171 sqm  
**View** : <https://www.ypa.com.au/7360395>

- Large open plan living area
- 3 large bedrooms
- Polished timber floors
- Heating and cooling
- Updated kitchen with stainless steel appliances
- Low maintenance front and backyard

Ready to move straight in with perfect presentation, outstanding location and all the bells and whistles!  
 (PHOTO ID REQUIRED AT OPEN FOR INSPECTION)

At YPA Estate Agents 'our service will move you'



**Kirsty Cunningham**  
 0414 344 475