



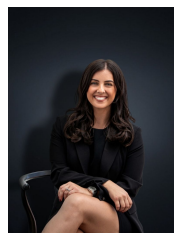
19 Swordgrass Avenue TARNEIT VIC

3 2 2

The new lucky owner of this property will be very fortunate to secure such a fantastic stylish family home! Located in the Claremont Park estate this beautiful residence is within close proximity to the new Tarneit train station, public transport, shops and the very reputable schools including the Islamic school of Melbourne and Good news Lutheran College. This property includes:

- Three bedrooms with built in robes plus separate study (potential 4th bedroom)
- Master bedroom with en suite and walk in robe
- Three living areas
- Kitchen/Meals arrangement with stainless steel appliances including dishwasher and double pantry
- Ducted heating & evaporative cooling
- Floating floorboards
- Solar panels
- 2,000L water tank

Building Size : 24 sqm
Land Size : 552 sqm
View : <https://www.ypa.com.au/7360420>



Kirsty Cunningham
 0414 344 475