



## 76 Kinglake Drive WYNDHAM VALE VIC

3  2  2 

It is not so often that you are offered an opportunity where you can pack your bags and move in with ease! This low maintenance residence with perfectly landscaped gardens is located in the ever growing corridor of Manor Lakes within minutes from the recently opened Wyndham Vale Train Station, Local Shops and reputable schools perfect for everybody! If you are a young family looking for your first home or a very savvy investor then you would want to see this! This open plan design is offered with:

Three generous sized bedrooms

Master with WIR and en suite

Kitchen with stainless steel appliances including dishwasher

Large family living arrangement overlooking the entire backyard

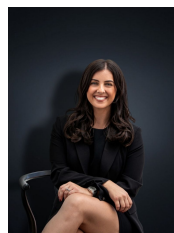
Ducted heating

Split system air conditioning

**Building Size** : 18 sqm

**Land Size** : 571 sqm

**View** : <https://www.ypa.com.au/7360427>



**Kirsty Cunningham**  
0414 344 475