



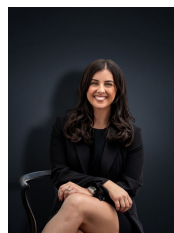
1 Snead Close HOPPERS CROSSING VIC

3 1 2

Situated in a highly sought after pocket of Hoppers Crossing, close to Bellbridge Primary School, parks, and within walking distance to Hoppers Crossing Train Station and public transport just around the corner awaits this property with amazing potential! You will be instantly impressed with the homes presentation which also offers three large sized bedrooms and an open plan meals and lounge area. Appointments include gas heating, air conditioning, and double carport with access to the large backyard. Sitting on approx. 630m² land an opportunity awaits here which is sure to attract many astute buyers or families wanting enough space for the children to play. (PHOTO ID REQUIRED AT OPEN FOR INSPECTION)

At YPA Estate Agents 'our service will move you'

Building Size : 13 sqm
Land Size : 630 sqm
View : <https://www.ypa.com.au/7360437>



Kirsty Cunningham
0414 344 475