



169 Ballan Road WYNDHAM VALE VIC

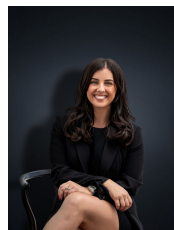
4 1 2

Built being one of the first homes classed under the Wyndham Vale postcode this stunning home is filled with character, warmth and just has that homely feel. When it comes to the location nearby to you are bus stops, Wyndham Vale Train Station, Local Shops, Restaurants and reputable Schools. The home offers:

- Massive Frontage & positioned on a 540 sq m block
- Wrap around porch
- Four massive bedrooms all with built in robes
- Central bathroom
- Formal lounge with gas heating
- Air conditioning
- Kitchen/Meals area with electric appliances and walk in pantry
- Decorative cornicing throughout the home
- Double garage at the rear with single roller door
- Driveway with room for 3-4 cars (off street parking)

Land Size : 540 sqm

View : <https://www.ypa.com.au/7360451>



Kirsty Cunningham
0414 344 475