



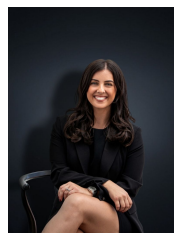
## 7 Broadlands Court HOPPERS CROSSING VIC

3 1 3

Located within easy reach to the freeway and within walking distance to the Werribee Plaza, AquaPulse/ Wyndham Events Centre, Heathdale Christian College and only a short distance to the Hoppers Crossing Train Station this dream home cannot be located in a more desirable location. Consisting of:

**Building Size** : 12 sqm  
**Land Size** : 589 sqm  
**View** : <https://www.ypa.com.au/7360471>

- Three large bedrooms all with built in robes
- Open plan design
- Kitchen overlooking the meals and family living arrangement with;
- Stainless steel appliances and dishwasher
- Central bathroom
- Split system air conditioning
- Ducted heating
- Covered outdoor entertaining area
- Double carport & 1.5 car garage with rear access
- All of this on a whopping 589 sq m (approx.) block this



**Kirsty Cunningham**  
**0414 344 475**