

10 Kondalilla Drive TRUGANINA VIC

4 2 2

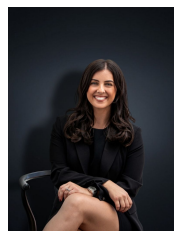
When being compared to its competitors you will quickly realise that there is no comparison. As a cut above the rest this beautifully presented family home does not compromise on space and style. Located in a well-established area nearby to the Tarneit train station, freeway access, local shops, reputable schools and beautiful walking tracks this home is an ideal family abode. Upon entering the massive grand entrance you will also find:

Large master bedroom with expansive fitted walk in robe and full spa en-suite with double vanity, double shower and separate toilet

Three remaining large bedrooms (all with BIRs) including a guest bedroom with access to the two-way central bathroom

Three separate living zones including formal lounge, rumpus and an open plan kitchen/meals and family

Building Size : 32 sqm
Land Size : 512 sqm
View : <https://www.ypa.com.au/7360488>



Kirsty Cunningham
0414 344 475