

25 Bartlett Crescent HOPPERS CROSSING VIC

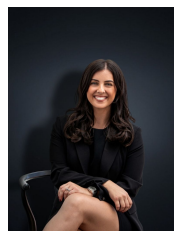
3 2 1

This well presented home in a lovely quiet street, is ideally positioned, within easy reach to schools, public transport, the new Pacific Werribee Plaza precinct and a stones throw away from the new Wyndham Leisure and Events Centre. Comprising three bedrooms, master with ensuite and walk in robe, the other two with built in robes, central bathroom and kitchen overlooking the meals area. From the meals area, you walk out to a massive built in pergola ideal for entertaining overlooking a great sized back yard, perfect for a quiet afternoon! Appointments include gas heating and cook top with electric oven and a single lock up garage.

This home is the perfect start for any first home buyer or investor. Dont miss such a great opportunity call for a private viewing today!

(PHOTO ID REQUIRED AT OPEN FOR INSPECTION)

Building Size : 15 sqm
Land Size : 620 sqm
View : <https://www.ypa.com.au/7360491>



Kirsty Cunningham
0414 344 475