



## 23 Latham Street WERRIBEE VIC

3  2  2 

Situated on a massive 710 sq m allotment this fabulous home presents a golden opportunity for any prospective purchaser! Located only minutes from the up and coming Pacific Werribee Shopping Centre, walking distance to both Westgrove and Bethany primary schools and beautiful parklands! Including:

Three fitted bedrooms

Master with en suite and walk in robe

Fully renovated kitchen with stainless steel appliances and dishwasher

Formal lounge and second living area to the rear of the home

Large pergola and outdoor entertaining overlooking the entire backyard with beautiful established gardens

Ducted heating and evaporative cooling

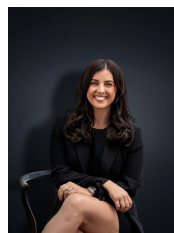
Alarm system and security cameras

Garden shed

**Building Size** : 20 sqm

**Land Size** : 710 sqm

**View** : <https://www.ypa.com.au/7360566>



**Kirsty Cunningham**  
0414 344 475