

## 46 Willmott Drive HOPPERS CROSSING VIC

4 1 2

Located within a short stroll to the new Aqua pulse swim centre, bus stops, reputable schools, including Heathdale Christian College and the new Pacific Werribee is this fantastic property! Within close proximity to freeway access, walking distance to Hoppers crossing train station and only a 5 minute drive to Werribee CBD. This property is definitely not the one you want to miss out on.

### Features include

Four spacious bedrooms, with potential to have a WIR and ensuite to Master.

All other bedrooms with BIR

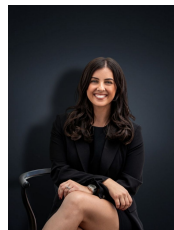
Kitchen/meals with stainless steel dishwasher, gas cooktop and oven

Massive separate lounge room

Beautifully polished floor boards

Central renovated bathroom

**Price** : \$ 370,000  
**Building Size** : 20 sqm  
**Land Size** : 533 sqm  
**View** : <https://www.ypa.com.au/7360569>



**Kirsty Cunningham**  
0414 344 475