



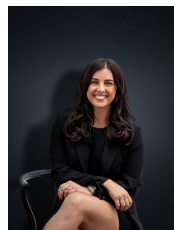
## 66 Marlborough Crescent HOPPERS CROSSING VIC

3  2  1 

Realise the full potential of this fantastic three bedroom plus study family home with a lick of paint and a little TLC. Located within walking distance to the train station, Werribee Pacific plaza and all other local amenities this home offers a solid foundation and a large corner allotment of 551m<sup>2</sup> (approx.). Comprising three fitted bedrooms plus study, ensuite to master, formal lounge, large kitchen with meals area and a separate rumpus ideal for the growing family. Positioned in central Hoppers Crossing with extras such as heating, air conditioning, polished timber floors, pergola for year round entertaining and plenty of car accommodation with an oversized garage at the rear. Established gardens and everything at your fingertips makes this the ideal place to call home (PHOTO ID REQUIRED AT OPEN FOR INSPECTION)

**Land Size** : 551 sqm

**View** : <https://www.ypa.com.au/7360594>



**Kirsty Cunningham**  
0414 344 475

At YPA Estate Agents 'our service will move you'