



9 Fatham Drive WYNDHAM VALE VIC

4  2  2 

In this rapidly growing suburb this surprising four bedroom home would make the idyllic first home for anyone entering this booming market or a perfect opportunity for an investor looking to upgrade their portfolio. Located within only a short distance to the new Wyndham Vale Train Station & Manor Lakes Shopping centre, reputable schools, public transport, local shops & parks the home is situated in a highly central location. The home in this central position offers an open plan design and includes:

Building Size : 20 sqm
Land Size : 437 sqm
View : <https://www.ypa.com.au/7360604>

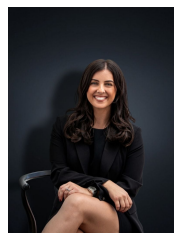
- Master bedroom with en-suite and walk in robe
- Three remaining bedrooms all with built in robes
- Kitchen/meals & family arrangement

- Kitchen with quality stainless steel appliances & dishwasher

- Large central bathroom

- Ducted heating

- Split system air conditioning



Kirsty Cunningham
0414 344 475