



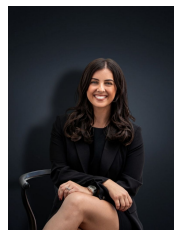
315 Morris Road HOPPERS CROSSING VIC

4 2 2

Presenting you this fine example of family living; offering you the complete package in a home or an investment opportunity! Located in the heart of Hoppers Crossing this multi-purpose residence is sure to suit many shrewd purchasers! Within a short distance to Wyndham Village Shopping centre, Thomas Carr College, Westbourne Grammar & AL-Taqwa College and an equally close distance to Hoppers Crossing Train Station & Tarneit Train Station the location is just dynamite! The home with so many quality and lifestyle benefits presents:

Land Size : 720 sqm
View : <https://www.ypa.com.au/7360606>

- Four fitted bedrooms
- Master with en suite and walk in robe
- Formal lounge upon entry
- Large kitchen with quality appliances and open plan kitchen/meals & family room
- Central bathroom
- Ducted heating



Kirsty Cunningham
0414 344 475