

142 Rosegrange Boulevard TARNEIT VIC

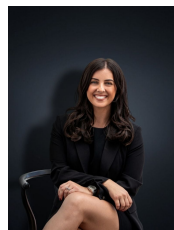
4 **2** **2**

To secure such a fabulous home would make you the envy of all your friends. Located in one of the most central positions of Tarneit this fantastic family home is within close proximity to Baden Powell Collage, Tarneit village Shopping Centre, the new Tarneit train station and parklands. A true credit to the current owner who have lived in and loved this property since day one making it look like a stylish display! Totalling:

- Four bedrooms
- Master bedroom with en suite and walk in robe
- Two separate large living areas
- Kitchen with stainless steel appliances & dishwasher overlooking the family/meals arrangement
- Outdoors an absolutely stunning stratco pergola perfect for entertaining guests!
- Ducted heating & evaporative cooling
- Double remote garage with internal access

Land Size : 448 sqm

View : <https://www.ypa.com.au/7360610>



Kirsty Cunningham
0414 344 475