



2 Mindara Court HOPPERS CROSSING VIC

3 1 2

Presenting a rare opening in the very central Woodville Park estate in Hoppers Crossing with plans & permits for a rear dwelling. Within walking distance to the Hoppers Crossing Train Station, Aqua Pulse and less than 2km Pacific Werribee this outstanding opportunity is sure to get you excited about investing in Hoppers Crossing! Within close proximity to reputable schools & freeway access the home encompasses:

Three fitted bedrooms; master with walk in robe

Central bathroom

Renovated kitchen with a combination of gas & electric appliances

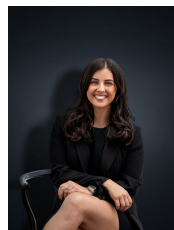
Quality fittings include; high ceilings, floating floorboards, ducted heating, evaporative cooling

Double garage with an extra room adjacent can be utilized as a games room/ teenage retreat

Situated on approximately 660 sq m

Land Size : 660 sqm

View : <https://www.ypa.com.au/7360611>



Kirsty Cunningham
0414 344 475