



## 47 Whitsunday Drive HOPPERS CROSSING VIC

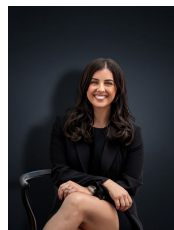
3  2 

Presenting this perfect opportunity and a chance of a lifetime to secure a low maintenance home in a highly desirable location. With walking distance to Cambridge Primary School, Bus Stops, Local shops and only a short distance from Pacific Werribee this property is sure to sweep you off your feet! The flowing floor plan offers:

**Building Size** : 15 sqm  
**Land Size** : 530 sqm  
**View** : <https://www.ypa.com.au/7360620>

- Three bedrooms
- Master bedroom with walk in robe and en suite
- Guest bedroom with en suite
- Lounge and adjacent dining
- Kitchen with gas cooktop, electric oven and dishwasher overlooking a second living space
- Massive pergola/ outdoor entertaining area
- Side access

Quality appointments include; floating floorboards, ducted heating, evaporative cooling, Gas Wall furnace, alarm system



**Kirsty Cunningham**  
0414 344 475