

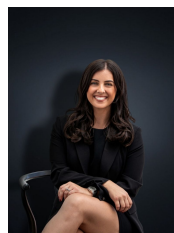
3 Daniel Court WERRIBEE VIC

3  1  2 

Investors, 1st home buyers get in quickly as this is a paramount opportunity to secure a very neat 3 bedroom home positioned in a quiet court location yet nearby to schools, public transport and shops.

Building Size : 13 sqm
Land Size : 531 sqm
View : <https://www.ypa.com.au/7360634>

- Spacious lounge with cathedral ceilings leading through to a separate meals and neat kitchen with abundance of cupboard space
- Three fitted bedrooms
- Central bathroom
- Gas heating
- Evaporative cooling
- Outdoor entertainment area
- Multiple garden sheds
- A lovely decked courtyard area with synthetic grass and matured landscaped gardens
- Double remote carport



Kirsty Cunningham
0414 344 475