

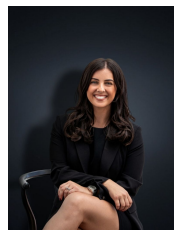


## 4 The Court HOPPERS CROSSING VIC

2 1 1

This beautiful unit is located in the heart of Hoppers Crossing offering security, privacy, and a low maintenance lifestyle. If you would like to have everything you could possibly dream of at your fingertips than this is the home for you. This neat and tidy unit is walking distance to Pacific Werribee. Offers two big bedrooms, central bathroom, single lock up garage, fresh paint and brand new carpet, you are sure to feel like you have hit the jackpot. Not only is this home in a prime location, it is low maintenance as there are minimal gardens to look after so you can spend more time on the things you love.  
(PHOTO ID REQUIRED AT OPEN FOR INSPECTION)

**Land Size** : 209 sqm  
**View** : <https://www.ypa.com.au/7360636>



**Kirsty Cunningham**  
0414 344 475

'At YPA Estate Agents 'our service will move you'