



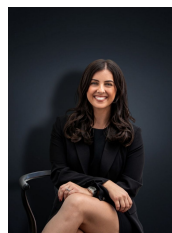
14 Julier Crescent HOPPERS CROSSING VIC

3  1  2 

Located in a central pocket of Hoppers Crossing within the Mossfiel estate this corner site property offers premium potential and is sure to suit many prospective purchasers. Being offered for the first time this 3 bedroom home is in immaculate condition and has been loved and cherished by the current owners. Within walking distance to local shops, public transport, gyms, sporting clubs, close to Hoppers Train station and within walking distance to Pacific Werribee this is certainly in the heart of Hoppers! The home in its dynamite location offers:

Building Size : 15 sqm
Land Size : 600 sqm
View : <https://www.ypa.com.au/7360640>

- 3 bedrooms all with built in robes
- Central bathroom
- Large open lounge room with fireplace and adjacent to the kitchen/meals arrangement
- Kitchen with updated appliances including gas cooktop and stainless steel oven



Kirsty Cunningham
0414 344 475