

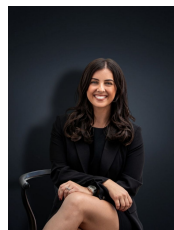


33 Bellbridge Drive HOPPERS CROSSING VIC

3 1 2

Offered for the first time this quality home offers a unique opportunity to secure a low maintenance property in a highly desirable location. Nestled on approximately 660 sq m in the ever popular Bellbridge Estate the home is located within walking distance to Bellbridge Primary School, local shops, public transport, less than a 5 minute drive to Hoppers Crossing station (only 1.4km from the property), short distance to Pacific Werribee this property is sure to sweep you off your feet! Suitable for but not limited to first home buyers and investors this establishment offers:

Land Size : 661 sqm
View : <https://www.ypa.com.au/7360644>



Kirsty Cunningham
 0414 344 475

- Three bedrooms
- Master Bedroom (maybe with walk in robe)
- Central bathroom
- Large formal lounge
- Kitchen/meals area
- Massive pergola for outdoor entertaining
- 2 car carport with access to large backyard