



2 Stagecoach Close HOPPERS CROSSING VIC

4  2  3 

This beautifully maintained property offers loads of potential with a spacious floor plan to suit any loving family, while providing individual living zones. Located in the central pocket of Hoppers Crossing close by to Primary & Secondary schools, within walking distance of Cambridge Primary School, local shops, and a short walk to Pacific Werribee (only 1.5km from the property). This immaculate family home in a quiet & friendly court location offers;

Four large bedrooms including large master suite with walk in robe and en suite

Central bathroom

Kitchen overlooking the large formal dining and family living arrangement

Massive formal lounge upon entry

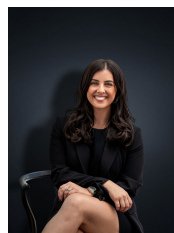
Double garage with rear drive through access with another oversized single garage at the rear

Large pergola and outdoor entertaining area

Building Size : 22 sqm

Land Size : 555 sqm

View : <https://www.ypa.com.au/7360645>



Kirsty Cunningham
0414 344 475