



9 Manning Circuit TARNEIT VIC

3 2 2

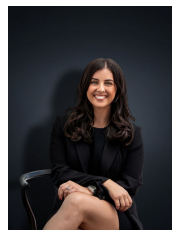
This newly built, corner property, which is only two years old, offers loads of potential with a spacious floor plan to suit any loving family. Located in the central pocket of Tarneit, Close by to Primary & Secondary schools, within walking distance to Baden Powell College, Local Shopping and Childcare Centers, public transport (only 800m to Bus stop from the property) and less than a 5 minute drive to Tarneit Train Station, as well as easy access to M1 Freeway. This immaculate family home, offers;
Large Master Bedroom including walk in robe and ensuite
Two remaining bedrooms including built in robes
Two bathrooms

Kitchen overlooking the formal dining and family living arrangement
Double Remote Lock up Garage

Quality fittings include- ducted heating, evaporative cooling, floorboards, stone benchtops, splash back,

Land Size : 352 sqm

View : <https://www.ypa.com.au/7360649>



Kirsty Cunningham
0414 344 475