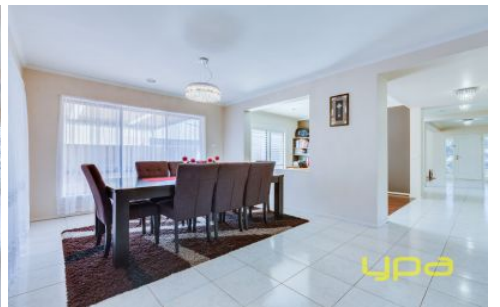
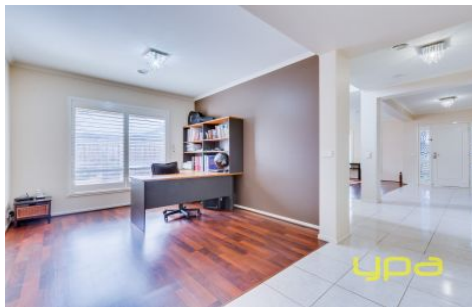
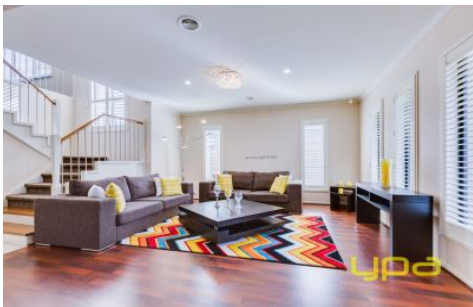


ypa



20 Rainbow Way TARNEIT VIC

4 2 5

With adjacent parklands, this magnificent four-bedroom home sets a new benchmark for luxurious, tailored living among the leafy surrounds of the prestigious Seasons Estate. Graceful, inviting and overflowing with natural light, this home entertains with a spacious kitchen family and meals area, formal lounge, outdoor entertaining area, theatre room and upstairs retreat. Situated on a generous 728 M2 allotment (approx.), this home allows plenty of car accommodation with a high clearance Colorbond carport with unrestricted side access, and a double lock-up remote garage with internal access. A preview into the abundance of quality appointments include a solar energy system, 900mm stainless steel appliances, dishwasher, water tank, ducted heating and evaporative cooling and Colourbond roofing. This is an address of contemporary and sophisticated family living in the heart of growing Tarneit with many of Wyndham amenities at your fingertips

Building Size : 44 sqm

Land Size : 728 sqm

View : <https://www.ypa.com.au/7360661>