



12 Burnham Drive HOPPERS CROSSING VIC

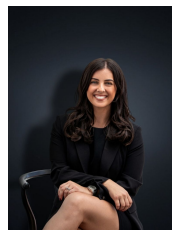
5  2 

This beautifully maintained family home, on a corner block of approximately 615m² offers loads of potential, and is the most versatile property on the market today. This five-bedroom, two-bathroom home with a flowing floor plan, offers the ideal blend of open and private spaces, creating a sought-after lifestyle for any loving family.

Situated in a quiet and desirable street of Hoppers Crossing, close by to Primary & Secondary schools, public transport (Hoppers Crossing station less than a 7 minute drive from the property), Community gyms, local shops, sporting clubs, university of Melbourne, easy access to freeways, and within minutes to the newly renovated Pacific Werribee Shopping Centre.

This property is a unique opportunity that will provide you with multiple choices for investors, renovators and large

Building Size : 22 sqm
Land Size : 615 sqm
View : <https://www.ypa.com.au/7360669>



Kirsty Cunningham
0414 344 475