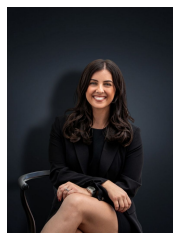


41 Bethany Road HOPPERS CROSSING VIC

3  1  1 

Offered for the very first time, this beautifully maintained home has loads of potential with a spacious floor plan to suit any loving family. The home is nestled in a quiet neighbourhood, and in on one of Hoppers Crossing best locations close to all amenities. Only a short stroll away to Primary & Secondary schools (with The Grange P-12 College only a two minute walk from the property) close by to Hogans Corner Shopping Centre, Sporting clubs, Community gyms, Public transport, and less than a five minute drive from the newly renovated Pacific Werribee. The home in its prime position offers:

Building Size : 15 sqm
Land Size : 565 sqm
View : <https://www.ypa.com.au/7360684>



Kirsty Cunningham
0414 344 475

- 3 Bedrooms
- 2 Way Bathroom
- Large formal lounge
- Timber Kitchen/meals area
- Massive pergola for outdoor entertaining overlooking the spacious backyard