



8 Lidgerwood Close HOPPERS CROSSING VIC

4 🏠 2 🚗

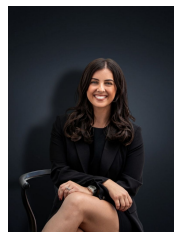
This one of a kind, impeccably renovated home presents nothing less than WOW factor from the minute you arrive! Situated on a massive 775m² allotment (approx.) in a quiet and desirable court the home offers nothing less than A class finishings and presentation.

When location is important then this property is one for you, being within a short distance to Primary & Secondary Schools, local shops, public transport (with Hoppers Crossing train station less than a 10 minute drive from the property), easy access to freeways, and only a short drive to Pacific Werribee. Completely renewed from head to toe this breathtaking residence offers:

- Master bedroom with ensuite and walk in robe
- Remaining bedrooms all with built in robes
- Open plan kitchen/ meals and family living arrangement
- Kitchen boasts timber feature benchtops, stainless steel appliances, dishwasher and plenty of storage space

Land Size : 774 sqm

View : <https://www.ypa.com.au/7360689>



Kirsty Cunningham
0414 344 475