



## 35 Melview Drive WYNDHAM VALE VIC

4  2  4 

An amazing opportunity to secure a perfect investment property, or stunning 1st home with all the bells and whistles.

Positioned in a quiet central location close to schools, parklands, public transport and shops with Bluestone Shopping Centre just a few minutes away.

Shimmering polished timber floors through out

Four bedrooms, main with en suite

Open plan lounge room leading through to the meals area

Modern hostess kitchen with Built In Pantrys, stainless appliances and dishwasher

Modern gas wall furnace, split system air conditioning

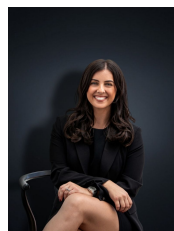
Sand stone paved pergola area

Double carport, a single carport and an oversized man cave/workshop/garage

**Building Size** : 16 sqm

**Land Size** : 565 sqm

**View** : <https://www.ypa.com.au/7360695>



**Kirsty Cunningham**  
0414 344 475