



2 Mailrun Court HOPPERS CROSSING VIC

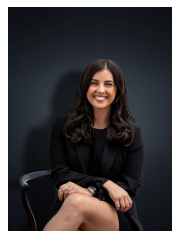
3 2 3

This cherished family home is located in the well-established Cambridge estate of Hoppers Crossing. With Pacific Werribee only a short walk away this home is in a dynamite family-friendly location and is sure to set hearts racing for owner occupiers and investors alike.

Within close proximity are primary & secondary schools including Cambridge Primary and child care centres, freeway access, local shops, public transport and parklands. The home on approximately 539 sq m boasts two living areas and includes:

- Three bedrooms including master with walk in robe and en suite
- Spacious formal lounge upon entry
- Large kitchen/meals and family living arrangement
- Massive pergola/outdoor entertaining area and space to

Building Size : 16 sqm
Land Size : 539 sqm
View : <https://www.ypa.com.au/7360696>



Kirsty Cunningham
0414 344 475