



## 4 Allawah Court HOPPERS CROSSING VIC

3 1 2

Presenting to you this fabulous family home nestled in a quiet court on a huge 685sq m block (approx.) offers loads of potential to any loving family, with all amenities at your door step. With side access and provision for subdivision (STCA) what more could you possibly ask for?

Boasting magnificent presentation, this home is situated close by to Primary & Secondary schools, Sporting clubs, local shops (within walking distance to Hogans Corner) and only a short drive to the newly renovated Pacific Werribee. This beautifully maintained home with its flowing floor plan offers you:

Three fitted bedrooms

Renovated central bathroom

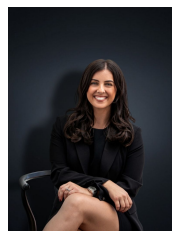
Renovated kitchen with quality appliances including dishwasher

Double sized garage to the rear and single carport with extra off street parking for approximately 3 cars

**Building Size** : 14 sqm

**Land Size** : 685 sqm

**View** : <https://www.ypa.com.au/7360698>



**Kirsty Cunningham**  
0414 344 475